

Designer Collections

O F N O R T H A M E R I C A



30% Off the Entire Catalog

Papillon Collection



mono-part

Ashley

Color shown: 1B/4

Layered Bob, tapered neck line, sides a bit longer than back. Very lightweight and comfortable.

Size: Average **Type:** Partial Mono Top **Weight:** 1 oz.

Features: Partial Monofilament Cap
Handtied Top, Front and Crown.
Velcro Adjustment, Stretch Lace Back.

Length: Front 3 1/4", Top 6", Sides 6",
Back 4 1/2", Nape 2".

Colors: 1B/4, 14/26-12, 23/16TT, 23C, 24BT18,
33/130, 38SH, 8H, 8/20F, 8/27T, 56F,

Regular Price \$159.⁰⁰

30% Off Sale

Sale Price \$111.30



mono-top

Brie

Color shown: 545

Classic curly style, looser curl throughout crown for a more contemporary look.

Size: Average

Weight: 2.7 oz.

Features: Velcro Adjustment, Nape Extension,
Open Ear Tabs, Stretch Lace Back,
Perma Tease, Handtied Monofilament top.

Length: Front: 3 1/2" Top: 3 1/2" Crown: 3 1/2"
Sides: 3" Back: 3 1/4" Nape: 2 3/4"

Colors: 1B, 2, 4, 6, 8, 14, 101, 10H, 12H, 14H, 16, 17/101, 18,
18/22, 22, 24/14, 30, 33, 34, 38, 38D, 44, 502, 538, 545,
56, 56/60, 60.

Regular Price \$159.⁰⁰

30% Off Sale

Sale Price \$111.30

Valery

Color shown: 16/613

Slightly layered elegant chin length bob with a bang.
Looks very natural on.

Size: Average **Weight:** 2.7 oz.

Features: Velcro Adjustment, Nape Extension,
Stretch Lace Back, Perma Tease, Perma
Lift, Handtied Monofilament top.

Length: Front: 4 1/2" Top: 6 1/2" Crown: 7 1/2"
Sides: 6" Back: 7" Nape: 3 1/2"

Colors: 6, 10H, 14/26-12, 14H, 16/613, 1B/4, 2/33R,
22H, 24BT18, 24/14, 27/33, 33/130R, 38SH,
4/131TR, 56/60, 502, 8/20F, 538.

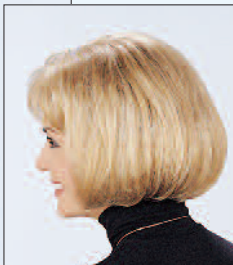
Regular Price \$159.⁰⁰

30% Off Sale

Sale Price \$111.30



mono-top



Papillon Collection



mono-top

Claudette Color shown: 17/101

You can style Claudette with bangs on your face or feathered to the side, or brush the back up to achieve a fluffy look.

Size: Average **Weight:** 2 oz.

Features: Monofilament Cap, Velcro Adjustment, Extended Nape (1/2"), Stretch Lace Back, Perma Tease, Perma Lift, Handtied Top, Handtied Front, Handtied Crown.

Length: Front: 3³/₄" Top: 3³/₄"
Crown: 3³/₄" Sides: 3³/₄" Back: 3¹/₂"
Nape: 2¹/₂"



mono-top

Doree Color shown: 56/60

Doree's soft bangs in front and neatly tapered neckline make it a perfect style for the woman on the go.

Size: Petite Average **Weight:** 1.6 oz.

Features: Monofilament Cap, Velcro Adjustment, Extended Nape (1/2"), Stretch Lace Back, Perma Tease, Perma Lift, Handtied Top, Handtied Front, Handtied Crown.

Length: Front: 3¹/₂" Top: 3¹/₂"
Crown: 3³/₄" Sides: 2³/₄"
Back: 2¹/₄" Nape: 2¹/₄"



mono-top

Elle Color shown: 17/101

Short loose light curls with feather bangs, make this monofilament style a pleasure to wear.

Size: Average **Weight:** 1.7 oz.

Features: Monofilament Cap, Velcro Adjustment, Extended Nape (1/2"), Stretch Lace Back, Thin Wefted, Perma Tease, Perma Lift, Handtied Top, Handtied Front, Handtied Crown.

Length: Front: 3¹/₂" Top: 3³/₄"
Crown: 3³/₄" Sides: 3" Back: 3"
Nape: 2"

Colors: 1B, 2, 4, 6, 8, 8H, 10H, 12H, 14H, 16, 17/101, 18, 18H, 18/22, 22, 23, 24, 24/14, 26B, 27, 30, 33, 34, 38, 38D, 44, 47, 51, 56, 56/60, 60, 101, 502.

Regular Price \$159.⁰⁰

30% Off Sale

Sale Price \$111.30

***Tear Out and Pass this coupon
on to a Friend***

***30% Off Sale
Call for Free Catalog***

1-800-248-2482

**Order Online at
www.designercollectionsofna.com**

***Tear Out and Pass this coupon
on to a Friend***

***30% Off Sale
Call for Free Catalog***

1-800-248-2482

**Order Online at
www.designercollectionsofna.com**



Allison Color shown: 56/60

Allison is neither full nor thick on top, so it's nice for the small-featured women who feels overwhelmed by too much hair.

Size: Average **Weight:** 2.1 oz.

Type: Short, straight style with a tapered back.

Features: Lace Top Cap, Velcro Adjustment, Extended Nape (1/2"), Stretch Lace Back, Front Velvet Band, Perma Tease, Perma Lift, Handtied Crown.

Length: Front: 3 1/2" Top: 3" Crown: 3"
Sides: 2 1/2" Back: 2 1/4" Nape: 2 1/4"

Colors: 1B, 2, 4, 6, 8, 8H, 10, 10H, 12, 12H, 14, 14H, 16, 17/101, 18, 18/22, 22, 22H, 23, 24, 24/14, 26B, 27, 30, 33, 34, 38, 38D, 44, 47, 51, 56, 56/60, 60, 101, 502, 538.

Reg. Price \$69.⁰⁰

30% Off Sale

Sale Price \$48.30



Bebe Color shown: 33/127H

Size: Average **Weight:** 1.95 oz

Type: Short and sassy.

This spiky modern style comes in gorgeous new colors.

Features: Lace Top Cap; Velcro Adjustment, Extended Nape, Stretch Lace Back, Front Velvet Band, Perma Tease, Perma Lift.

Length: Front: 3 1/2" Top: 3 1/2" Sides: 2 3/4"
Back: 2 1/2" Nape: 2 1/2"

Colors: 4/263, 25/127R, 14/25H, 33/271/127A, 1/133ALT, 4/132ALT, 8/26ALT, 22/12ALT, 16/21H, 29/28ALT, 60/44ALT, 10H, 12H, 14H, 1B/4ALT, 2/30ALT, 273T.

Reg. Price \$69.⁰⁰

30% Off Sale

Sale Price \$48.30

VISIT US ON THE WEB AT

www.designercollectionsofna.com

To Place an order or for your free catalog

**Call toll free: 1-800-248-2482
or 1-800-944-7511**

VISIT US ON THE WEB AT

www.designercollectionsofna.com

To Place an order or for your free catalog

**Call toll free: 1-800-248-2482
or 1-800-944-7511**



Becky Color shown: 4/30T

Size: Average **Weight:** 2.2 ozs. **Type:** Short, wavy style

Length: Front: 4 1/4" Crown: 4 1/2" Top: 4 1/2"

Sides: 3 1/2 - 4 1/4" Back: 2 3/4 - 3 1/2" Nape: 2 3/4"

Features: Open cap, Velcro adjustment, Open ear tabs, Stretch lace back, Front velvet band, Perma tease, Perma lift, Hand-tied crown, and very light weight.

Colors: 1, 1B, 2, 4, 6, 27, 30, 33, 34, 40, 44, 51, 280, 351, 1B/27T, 1B/33T, 1B/60T, 2/130T, 4/30T, 4G, 8/26BT.

Reg. Price \$55.00

30% Off Sale

Sale Price \$38.50



Baily Color shown: #4

Short, curly wet look, framing the face with a soft feather like bang and sides.

Size: Average **Weight:** 3.5 ozs.

Length: Front: 3" Top: 2" Crown: 2 1/2"

Sides: 2 1/2" Upper Back: 2" Nape: 1 1/2"

Features: Net top cap, Hook Adjustment, Neck Extension, Stretch lace back, Front velvet band, Curly wet look

Colors: 1B, 2, 4, FS1B/30, FS1B/33, FS141/147, FS4/27, FS4/30, FS8/26B, FS40/51, FS44/60, 280, 351, TT1B/27, TT1B/30, TT1B/350, TT27/613.

Reg. Price \$55.00

30% Off Sale

Sale Price \$38.50



Brandy Color shown: #2

Shoulder Length, Skin Crown, Bangs. Sides cut softly towards face, back long layers with a slight flip.

Size: Average **Weight:** 5.7 ozs.

Length: Front: 3 1/2" Top: 6 1/2" Crown: 16"

Sides: 12" Upper Back: 12" Nape: 11"

Features: Net top cap, Hook adjustment, Neck extension, Stretch lace back, Front velvet band, Perma tease, Perma lift, Skin Crown.

Colors: 1, 1B, 2, 4, FS1B/30, FS1B/33, FS4/27, FS4/30, FS99J/130, HT1B/188, 8/26BT

Reg. Price \$55.00

30% Off Sale

Sale Price \$38.50



Cami Color shown: 4/30MT

Size: Average **Weight:** 2.6 ozs. **Type:** Short, softly waved style

Length: Front: 3 1/4 - 3 3/4" Top: 3 1/4 - 3 3/4" Crown: 3"

Sides: 2 1/4 - 2 3/4" Back: 1 3/4 - 2 1/2" Nape: 1 3/4"

Features: Lace top cap, Velcro adjustment, Stretch lace back, Extended nape (1 1/2"), Perma tease, Perma lift, Hand-tied crown.

Colors: 1, 1B, 2, 4, 6, 27, 30, 33, 34, 40, 44, 51, 280, 351, 4G, 1B/27MT, 1B/33MT, 1B/60T, 2/130T, 4/30MT, 8/26BT.

Reg. Price \$55.00

30% Off Sale

Sale Price \$38.50



Celine Color shown: 18

Size: Petite or Average **Weight:** 2.2 oz.

Type: Casual style with short waves on the top and sides, with a tapered neckline.

Features: Lace Top Cap, Velcro Adjustment, Extended Nape (1/2"), Stretch Lace Back, Front Velvet Band, Perma Tease, Perma Lift, Handtied Crown.

Length: Front: 3 1/2" Top: 3 1/2" Sides: 3"
Crown: 3" Back: 2 3/4" Nape: 2 1/4"

Colors: 1B, 2, 4, 6, 8, 8H, 10, 10H, 12, 12H, 14, 14H,
16, 17/101, 18, 18/22, 18H, 22, 22H, 23, 24, 24/14,
26B, 27, 30, 33, 34, 38, 38D, 44, 47, 51, 56, 56/60, 60,
101, 502, 538.

Reg. Price \$69.00

30% Off Sale

Sale Price \$48.30



Chloe Color shown: 33/130R

Size: Average **Weight:** 2.2 oz.

Type: Easy-to-wear basic style with light, fluff back.

Features: Open Cap, Velcro Adjustment, Nape Extension,
Stretch Lace Back, Front Velvet Band, Perma Tease, Perma Lift.

Length: Front: 4 1/2" Top: 4" Crown: 4"
Sides: 4" Back: 3 1/2" Nape: 3"

Colors: 4, 8H, 10H, 12H, 22H, 60, 101, 351, 502,
38SH, 12/613, 16/613, 2/33R, 24/14, 27/33,
33/130R, 56/60.

Reg. Price \$69.00

30% Off Sale

Sale Price \$48.30



Danielle Color shown: 33/130R

With fourteen flowing inches of hair, there's so much you can do with this style. Light brushing makes it fuller and fluffier. Or pluck it gently with a wide tooth comb or pick for the "electric" curls shown here.

Size: Average **Weight:** 5 oz. **Type:** Long curly style.

Features: Lace Top Cap, Velcro Adjustment, Open Ear Tabs,
Stretch Lace Back, Perma tease, Perma Lift.

Length: Front: 4" Top: 6" Crown: 6 1/2"
Sides: 10" Back: 14" Nape: 12 1/2"

Colors: 1B, 2, 4, 4/131TR, 6, 8, 8H, 8/26T, 10, 10H, 12, 14, 14/26-12,
16, 16/613SH, 18, 18/22, 22, 22H, 23, 24, 24/14, 24BT18,
26B, 27, 28, 30, 31, 33, 33/130R, 502.

Reg. Price \$69.00

30% Off Sale

Sale Price \$48.30



Cashmere Color shown: 351

Size: Average **Weight:** 1.9 ozs. **Type:** Short, curly style.
Length: Front: 3½" Top: 3½" Crown: 3½"
 Sides: 3" Back: 3" Nape: 3"
Features: Open cap, Velcro adjustment, Open ear tabs, Stretch lace back, Front velvet band, Perma tease, Perma lift, very light weight.
Colors: 1, 1B, 2, 4, 6, 33, 34, 40, 44, 51, 280, 351, 1B/60T.

Reg. Price \$55.00

30% Off Sale

Sale Price \$38.50



Heat Resistant Fiber

Davina Color shown: FL4/30

Size: Average **Weight:** 2 ozs.
Length: 3¼" Top: 3¼" Crown: 3½"
 Sides: 2½" Upper Back: 2" Nape: 2"
Features: Partial Open Top, Hook Adjustment,
 Nape Extension, Thin Stretch Lace Back,
 Small Front Velvet Band, Perma Tease, Perma Lift.
Colors: 1B, 2, 4, 6, FL1B/30, FL2/33, FL4/30, FL8/26B,
 FL40/51, FL44/51

Reg. Price \$55.00

30% Off Sale

Sale Price \$38.50



Crystal color shown is DF4/182

Size: Average **Weight:** 2 ozs.
Type: Beautiful, natural basic style with lightweight cap. Easy to wear.
Length: Front: 3¼" Top: 3¼" Crown: 3½"
 Sides: 2½" Back: 2" Nape: 2"
Features: Open cap, Hook adjustment,
 Nape extension, Thin Stretch Lace Back,
 Front Velvet Band, Perma Tease, Perma Lift.
Colors: 1B, 2, 4, 40, 280, 351, DF1B/27, DF33/27,
 DF4/182, DF44/60.

Reg. Price \$55.00

30% Off Sale

Sale Price \$38.50



Dana Color shown: 30

Size: Average **Weight:** 2.5 ozs.
Type: Medium length cut with gentle waves.
Length: Front: 3¾" Top: 3¾ - 4" Crown: 4½"
 Sides: 3¾" Back: 3¾ - 4" Nape: 3½"
Features: Lace top cap, Velcro adjustment, Perma tease,
 Extended nape (½"), Stretch lace back, Hand-tied front and crown.
Colors: 1, 1B, 2, 4, 6, 27, 30, 33, 34, 40, 44, 51, 280,
 351, 1B/27T, 4/30T, 4G, 8/26BT.

Reg. Price \$55.00

30% Off Sale

Sale Price \$38.50

Essie

Color shown: #22

Size: Average

Weight: 2.7 oz.

Type: Ultralight, Can be worn brushed in a low flip or a higher flip or crunched with soft curl.

Features: Partial Open Top, Velcro Adjustment, Nape Extension, Thin Stretch Lace Open Back, Front Velvet Band, Perma Tease, Perma Lift.

Length: 11" Top: 5" Crown: 7" Short Bangs: 2 1/2"

Sides: 6" Back: 6" Nape: 4 1/2"

Colors: 2/33, 8H, 12H, 14/26-12, 18/22, 22, 502, 33/130, 56/60, 44/60SH.

Reg. Price \$69.⁰⁰

30% Off Sale

Sale Price \$48.30

Emily

Color shown: 24/14

Emily is our basic, tapered cut but with a little extra length on the sides for a bit more flair and coverage.

Size: Average

Weight: 2.1 oz.

Type: Short, soft curl available in many colors.

Features: Featherlight® Design, Velcro Adjustment, Extended Nape (1/2"), Open Ear Tabs, Stretch Lace Back, Front Velvet Band, Perma Tease, Perma Lift.

Length: Front: 3 1/2" Top: 3 1/2" Crown: 3 1/2"

Sides: 3 1/2" Back: 3" Nape: 1 3/4"

Colors: 1B, 2, 4, 6, 8, 8H, 10, 10H, 12, 12H, 14, 14H, 16, 17/101, 18, 18H, 18/22, 22, 22H, 23, 24, 24/14, 26B, 27, 30, 33, 34, 38, 38D, 44, 47, 51, 56, 56/60, 60, 101, 538.

Reg. Price \$69.⁰⁰

30% Off Sale

Sale Price \$48.30

Harmony

Color shown: 24/613R

Short, ultra light design featuring a wispy neckline.

Size: Average

Weight: 2 oz.

Type: Short, tapered back, Wispy curly top, Ultra-light construction.

Features: Open cap, Velcro Adjustment, Open Ear Tabs, Front Velvet Band, Stretch Lace Back, Perma Tease, Perma Lift.

Length: Front: 4" Top: 3 1/2" Crown: 4"

Sides: 3" Back: 4" Nape: 2"

Colors: 4, 8/20F, 8/29SH, 14H, 26SH, 27/33, 33/130, 16/613SH, 24/613R, 18/22, 24/14, 38SH, 44/60SH, 56/60, 60.

Reg. Price \$69.⁰⁰

30% Off Sale

Sale Price \$48.30

Kacey

Color shown: 4/263

Size: Average

Weight: 1.95 oz

Type: Short, smooth style with beautiful highlights.

Features: Open cap, Velcro Adjustment, Stretch Lace Back, Front Velvet Band, Perma Tease, Perma Lift.

Length: Front: 4 1/4" Top: 3 1/2" Crown: 3 1/4"

Sides: 2 1/4" Back: 2 1/2" Nape: 2 1/4"

Colors: 4/263, 25/127R, 14/25H, 33/127H, 1/133ALT, 4/132ALT, 8/26ALT, 22/12ALT, 16/21H, 29/28ALT, 60/44ALT.

Reg. Price \$69.⁰⁰

30% Off Sale

Sale Price \$48.30





Daisy Color shown: 351

Size: Average **Weight:** 2.5 ozs.

Type: Ultra-light, easy to wear, soft wave throughout.

Length: Front: 3¾" Crown: 4½" Top: 3¾"
Sides: 3¾" Back: 4½" Nape: 2½"

Features: Lace top cap, Velcro adjustment,
Extended nape(½"), Stretch lace back,
Perma tease.

Colors: 1, 1B, 2, 4, 6, 27, 30, 33, 34, 40, 280, 351, 1B/27T, 1B/33T,
1B/60T, 2/130T, 4/30T, 4G, 8/26BT.

Reg. Price \$55.⁰⁰

30% Off Sale

Sale Price \$38.50



Elsa Color shown: 8/26BT

Size: Average **Weight:** 2.5 ozs.

Type: Classic cut with feathery bangs and sides.

Length: Front: 3¾" Crown: 4½" Top: 3¾"
Sides: 3¾" Back: 4½" Nape: 2½"

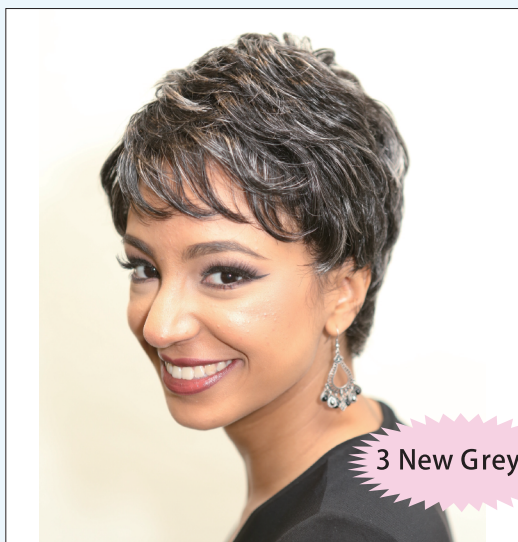
Features: Lace top cap, Velcro adjustment,
Extended nape(½"), Stretch lace back,
Perma tease.

Colors: 1, 1B, 2, 4, 6, 27, 30, 33, 34, 40, 44, 280, 351, 1B/27T,
1B/33T, 1B/60T, 2/130T, 4/30T, 4G, 8/26BT.

Reg. Price \$55.⁰⁰

30% Off Sale

Sale Price \$38.50



Delta Color shown: HT40/51

Size: Average **Weight:** 2.2 ozs.

Type: Very short, stylish, semi-wet look style

Length: Front: 3½" Top: 2½" Crown: 3"
Sides: 2½" Back: 1¾" Nape: 2"

Features: Lace top cap, Hook adjustment,
Stretch lace back, Front velvet band, Perma tease,
Perma lift, Handtied crown, Semi-wet look

Colors: 1, 1B, 2, 4, 34, 40, 280, DF1B/30, DF4/27, DF44/60,
DF8/26B, DF99J/182, HT1B/188, HT40/51, TT1B/27,
TT1B/30, TT1B/350, TT1B/39.

Reg. Price \$55.⁰⁰

30% Off Sale

Sale Price \$38.50

3 New Greys



Gail Color shown: 1B/33T

Size: Average **Weight:** 2.2 ozs. **Type:** Short, wavy style

Length: Front: 4 1/4" Crown: 4 1/2" Top: 4 1/2"

Sides: 3 1/2 - 4 1/4" Back: 2 3/4 - 3 1/2" Nape: 2 3/4"

Features: Open cap, Velcro adjustment, Open ear tabs, Stretch lace back, Front velvet band, Perma tease, Perma lift, Hand-tied crown, and very light weight.

Colors: 1, 1B, 2, 4, 6, 27, 30, 33, 34, 40, 44, 51, 280, 351, 1B/27T, 1B/33T, 1B/60T, 2/130T, 4/30T, 4G, 8/26BT.

Reg. Price \$55.⁰⁰

30% Off Sale

Sale Price \$38.50



Ginger Color shown: 8

Size: Average **Weight:** 4.7 ozs.

Type: Long wavy style with layered cut.

Length: Front: 3 1/2 - 4 1/2" Top: 4" Crown: 8-10"

Sides: 8 - 10 1/2" Back: 8 - 11" Nape: 13 1/2"

Features: Lace top cap, Hook adjustment, Extended nape (3/4"), Stretch lace back, Perma tease, Perma lift.

Colors: 1, 1B, 2, 4, 6, 8, 10, 27, 33, 2/30, 4/12, 1B/30T, M4/30.

Reg. Price \$55.⁰⁰

30% Off Sale

Sale Price \$38.50



Gina Color shown: FS2/27

This is a lace front wig which is very soft and natural looking with a Tapered neckline.

Size: Average **Weight:** 2 ozs.

Type: Lace Front, very natural looking, tapered neckline.

Length: Front 3 3/4", Top 3 1/2", Sides 3", Back 3", Nape 2 1/2",

Features: Lace Front, Open cap construction, Hook Adjustment, Stretch Lace Back, Perma tease, Perma lift.

Colors: 1B, 2, 4, 1B/33T, 4/27T, 280, 2F40/51.

Reg. Price \$55.⁰⁰

30% Off Sale

Sale Price \$38.50



Hailee Color shown: 33

Size: Average **Weight:** 2.6 ozs.

Type: Short, softly waved style.

Length: Front: 3 1/4 - 3 3/4" Top: 3 1/4 - 3 3/4" Crown: 3"
Sides: 2 1/4 - 2 3/4" Back: 1 3/4 - 2 1/2" Nape: 1 3/4"

Features: Lace top cap, Velcro adjustment, Stretch lace back
Extended nape (1/2"), Perma tease, Perma lift, Hand-tied crown.

Colors: 1, 1B, 2, 4, 6, 27, 30, 33, 34, 40, 44, 51, 280, 351,
4G, 1B/27MT, 1B/33MT, 1B/60T, 2/130T, 4/30MT, 8/26BT.

Reg. Price \$55.⁰⁰

30% Off Sale

Sale Price \$38.50



Helen Color shown: DF4/27

Size: Average **Weight:** 2.2 ozs.

Type: Short and Stylish for today's women on the go.

Length: Front: 3 1/2" Top: 2 1/2" Crown: 3"
Sides: 2 1/2" Back: 1 3/4" Nape: 2"

Features: Lace top cap, Hook adjustment,
Stretch lace back, Front velvet band, Perma tease,
Perma lift, Handtied crown, Semi-wet look

Colors: 1, 1B, 2, 4, 34, 40, 280, DF1B/30, DF4/27, DF44/60,
DF8/26B, DF99J/182, HT1B/188, HT40/51, TT1B/27,
TT1B/30, TT1B/350, TT1B/39.

Reg. Price \$55.⁰⁰

30% Off Sale

Sale Price \$38.50



Hilda Color shown: #51

Size: Average **Weight:** 2.2 ozs.

Type: Short, easy to wear, very neat tapered neckline.

Length: Front: 3 1/4 - 3 3/4" Top: 3 1/4 - 3 3/4" Crown: 3"
Sides: 2 1/2 - 2 3/4" Back: 1 3/4 - 2 1/2" Nape: 1 3/4"

Features: Lace top cap, Velcro adjustment, Stretch lace back
Extended nape (1/2"), Perma tease, Perma lift,
Hand-tied crown.

Colors: 1B, 2, 4, 6, 27, 30, 33, 34, 40, 44, 51, 280, 351,
4G, 1B/27MT, 1B/33MT, 1B/60T, 2/130T,
4/30MT, 8/26BT.

Reg. Price \$55.⁰⁰

30% Off Sale

Sale Price \$38.50



Hair Pieces - Wiglets

Both wiglets feature soft curls that can be combed in ringlets, or brushed out into gentle waves. The diamond, open-weft construction lets you pull your own hair through, like some costly hair pieces selling for \$69 or more. Tiny wire combs hold the wiglets securely in place.



Demi Tress Color shown: 17/101

Size: One Size Fits All **Weight:** .75 oz.

Features: Perma Tease, Perma Lift, Front and Back Wire Combs.

Length: Base Size: 4½" x 5½" Oval Base, Sides & Back: 4½"

Colors: 1B, 2, 4, 6, 8, 10, 10H, 12, 12H, 14, 14H, 16, 17/101, 18, 18/22, 22, 22H, 23, 24, 24/14, 26B, 27, 30, 33, 34, 38, 38D, 44, 47, 51, 56, 56/60, 60, 101, 502.

Reg. Price \$34.⁹⁵

30% Off Sale

Sale Price \$24.50



Perfect Tress Color shown: 24/14

Size: One Size Fits All **Weight:** 1.1 oz.

Features: Perma Tease, Perma Lift, Front and Back Wire Combs.

Length: Base Size: 7" Round Front, Crown & Sides: 4¼"

Center & Back: 5"

Colors: 1B, 2, 4, 6, 8, 10, 10H, 12, 12H, 14, 14H, 16, 17/101, 18, 18/22, 22, 22H, 23, 24, 24/14, 26B, 27, 30, 33, 34, 38, 38D, 44, 47, 51, 56, 56/60, 60, 101, 502.

Reg. Price \$34.⁹⁵

30% Off Sale

Sale Price \$24.50



Divine Color shown: 2

May also be used as a pull through top piece.

Size: One size fits all **Weight:** 1 ozs. **Type:** Curly Hair Piece.

Length: Front: 5" Top: 5" Crown: 5" Sides: 5"

Features: Open cap, Perma tease Elastic pull string closure Hair piece is 6" round and forms a bun approx 3".

Colors: 1, 1B, 2, 4, 6, 33, 40, 280, 8/26BT.

Reg. Price \$34.⁹⁵

30% Off Sale

Sale Price \$24.50



Tawny Color shown: 40

Size: One size fits **Weight:** 1.25 ozs.

Type: Curly top hair piece.

Length: Front: 4¾" Top: 4¾"

Crown: 4½" Sides: 4¾"

Features: Lace top cap, Perma tease, Perma lift,

Front/back clip combs, Corner hair pin loops

Colors: 1, 1B, 2, 4, 6, 33, 34, 40, 280.

Reg. Price \$34.⁹⁵

30% Off Sale

Sale Price \$24.50



Jozy Color shown: 1B/30T

Size: Average

Weight: 3.5 oz

Type: Mid-length page boy.

Gorgeous new colors and skin part for natural look.

Features: Lace top cap, Hook adjustment, Skin Part, Partial Skin Top.

Length: Ranges from 3" to 13"; slightly layered around face.

Colors: 1B, 2, 4, 1B/30T, 1B/33T, 4/27T, 27/613F, 230/23H, 33/26BT, 8/26BT/613, 33/27H, 2/30H, 8/26BT, M4/30.

Reg. Price \$49.⁰⁰

30% Off Sale

Sale Price \$43.30



Randi

Size: Average

Weight: 2.5 ozs.

Type: Sleek modern style with tapered back.

Length: Front: 4" Top: 4" Crown: 4"
Sides: 2½" Back: 2½" Nape: 2"

Features: Lace top cap, Velcro adjustment, Extended nape (¾"), Stretch lace back, Perma tease, Perma lift

Colors: 1B/27T, 1B/60T, 2/130T, 4/30T, 8/26BT, 14/22T.

Reg. Price \$69.⁰⁰

30% Off Sale

Sale Price \$48.30



Lily Color shown: 1B/4

Size: Average

Weight: 2.2 oz.

Type: Short, sophisticated fluff in exciting new colors. Style is all-over feather cut.

Features: Open Cap with Hourglass lace for easy maintenance, Velcro Adjustment, Stretch Lace Back, Front Velvet band, Perma Tease, Perma Lift.

Length: Front: 4" Top: 3½" Crown: 3½"
Sides: 2¾" Back: 2¾" Nape: 2¼"

Colors: 1/133ALT, 2/30ALT, 25/127R, 14/25H, 4/132ALT, 4/263, 8/26ALT, 22/12ALT, 16/21H, 29/28ALT, 33/127H, 38D/101, 60/44ALT, 10H, 12H, 14H, 1B/4ALT, 273T.

Reg. Price \$69.⁰⁰

30% Off Sale

Sale Price \$48.30



Edie Color shown: 51

Edie is a layered cut with a tapered neckline, enough volume on sides to cover ears.

Size: Average **Weight:** 2.1 oz.

Type: Short with a soft curl, easy to work with.

Features: Featherlight® Design, Velcro Adjustment, Extended Nape (1/2"), Open Ear Tabs, Stretch Lace Back, Front Velvet Band, Perma Tease, Perma Lift

Length: Front: 3 1/2" Top: 3 1/2" Crown: 3 1/2"
Sides: 3 1/2" Back: 3" Nape: 1 3/4"

Colors: 1B, 2, 4, 6, 8, 8H, 10, 10H, 12, 12H, 14, 14H, 16, 17/101, 18, 18H, 18/22, 22, 22H, 23, 24, 24/14, 26B, 27, 30, 33, 34, 38, 38D, 44, 47, 51, 56, 56/60, 60, 101, 538.

Reg. Price \$69.00

30% Off Sale

Sale Price \$48.30



Heather Color shown: 26B

Size: Average **Weight:** 2.8 oz.

Type: Shoulder length extra wavy shag cut.

Want more curl, just shake and work with your fingers for a curly effect.

Features: Featherlight® Design, Velcro Adjustment, Extended Nape (1/2"), Open Ear Tabs, Stretch Lace Back, Front Velvet Band, Perma Tease, Perma Lift

Length: Front: 4 1/2" Top: 4 1/2" Crown: 4 1/2"
Sides: 4 1/2" Back: 5" Nape: 5 1/2"

Colors: 1B, 2, 4, 4/131TR, 8, 8H, 10H, 12H, 14H, 16, 17/101, 18, 18H, 18/22, 22H, 23, 24H, 24/14, 26B, 30, 33, 33/130R, 34, 38, 38D, 38SH, 44, 47, 51, 56/60, 101, 502, 538.

Reg. Price \$69.00

30% Off Sale

Sale Price \$48.30



Keri Color shown: 44/60SH

Short, lightweight wedge back with a tapered neckline.

Size: Average **Weight:** 2.3 oz.

Type: Short, lightweight wedge back style with tapered back.

Features: Open Cap, Velcro Adjustment, Nape Extension, Stretch Lace Back, Front Velvet Band, Perma Tease, Perma Lift.

Length: Front: 3 1/2" Top: 4" Crown: 4"
Sides: 3 1/2" Back: 3" Nape: 1 3/4"

Colors: 4/131TR, 14/26-12, 14H, 8/20F, 16/613SH, 56/60, 24/613A, 24BT18, 27/33, 33/130R, 38SH, 44/60SH, 502.

Reg. Price \$69.00

30% Off Sale

Sale Price \$48.30



Lydia Color shown: 8

Long, wispy front adds softness to this tapered wedge back style. Lydia can be worn as shown with full bangs or brushed off your forehead.

Size: Average

Weight: 2.3 oz.

Features: Featherlight® Design, Velcro Adjustment, Extended Nape (1/2"), Open Ear Tabs, Stretch Lace Back, Front Velvet Band, Perma Tease, Perma Lift.

Length: Front: 4 1/4" Top: 4 1/4" Crown: 4"
Sides: 3 1/2" Back: 3 1/2" Nape: 1 3/4"

Colors: 1B, 2, 4, 6, 8, 8H, 10H, 12H, 14, 14H, 16, 17/101, 18, 18/22, 22, 22H, 23, 24, 24/14, 26B, 27, 30, 33, 34, 38, 38D, 44, 47, 51, 56, 56/60, 60, 101, 502, 538.

Reg. Price \$69.00

30% Off Sale

Sale Price \$48.30



Megan Color shown: 4

Traditional "fluff back" style with looser waves on top and sides.

Size: Large only

Weight: 2.75 oz.

Features: Open cap, Velcro Adjustment, Nape extension, Stretch lace back, Front velvet band, Thin wefted, Perma Tease, Perma Lift.

Length: Front: 3 3/4" Top: 3 3/4" Crown: 3 3/4"
Sides: 3 3/4" Back: 3 1/4" Nape: 3 1/4"

Colors: 2, 4, 8H, 10H, 12H, 14H, 16, 17/101, 18/22, 22H, 24, 26B, 34, 38SH, 33/130R, 44, 51, 502, 538, 56/60.

Reg. Price \$69.00

30% Off Sale

Sale Price \$48.30



Piquant Color shown: 34

This short graceful style is especially flattering for the woman with smaller features, who wants full coverage with a minimum amount of hair.

Size: Petite or Average

Weight: 1.8 oz.

Type: Short wavy style

Features: Lace Top Cap, Velcro Adjustment, Stretch Lace Back, Perma Tease, Perma Lift, Handtied Front

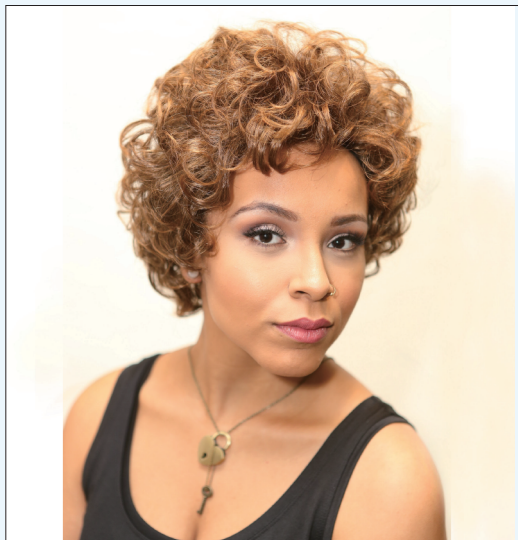
Length: Front: 3" Top: 3" Crown: 2 3/4"
Sides: 2 1/2" Back: 2 1/4" Nape: 2 1/4"

Colors: 1B, 2, 4, 6, 8, 8H, 10, 10H, 12, 12H, 14, 14H, 16, 17/101, 18, 18/22, 18H, 22, 23, 24, 24/14, 26B, 27, 30, 33, 34, 38, 38D, 44, 47, 51, 56, 56/60, 60, 101, 502, 538.

Reg. Price \$69.00

30% Off Sale

Sale Price \$48.30



Honey Color shown: #T4/27

Size: Average **Weight:** 2.8 ozs.

Type: Chin length, wavy style.

Length: Front: 4½" Top: 4½" Crown: 5"
Sides: 5" Back: 5" Nape: 4¾"

Features: Lace top cap, Velcro adjustment, Extended nape (½"),
Stretch lace back and Perma tease.

Colors: 1, 1B, 2, 4, 6, 33, 40, T1B/30, T4/27.

Reg. Price \$55.⁰⁰

30% Off Sale

Sale Price \$38.50



Ina Color shown: 34

Size: Average **Weight:** 2.4 ozs.

Type: Nicely textured curly style, with a slightly extended nape.

Length: Front: 3¾" Top: 3¾" Crown: 3¼"
Sides: 3¼" Back: 2½ - 3¼" Nape: 2"

Features: Lace top cap, Velcro adjustment, Perma
tease, Stretch lace back and
Extended nape (½").

Colors: 1, 1B, 2, 4, 6, 27, 30, 33, 34, 40, 44, 51, 280,
351, 4G, 1B/60T.

Reg. Price \$55.⁰⁰

30% Off Sale

Sale Price \$38.50



Gussy Color shown: DF33/27

Size: Average **Weight:** 2 ozs.

Type: Ultra-light design, so easy to wear. Just shake it out well, put
on and work with your hands. Short and feathery with a
tapered neckline.

Length: Front: 3¼" Top: 3¼" Crown: 3½"
Sides: 2½" Back: 2" Nape: 2"

Features: Open cap, Hook adjustment,
Nape extension, Thin Stretch Lace Back,
Front Velvet Band, Perma Tease, Perma Lift.

Colors: 1B, 2, 4, 40, 280, 351, DF1B/27, DF33/27,
DF4/182, DF44/60.

Reg. Price \$55.⁰⁰

30% Off Sale

Sale Price \$38.50



Jade

Color shown: 2

Size: Average **Weight:** 2.75 ozs.

Type: Chin length bob, very soft and natural.

Length: Front: 4" Top: 10" Crown: 10"
Sides: 10" Nape: 2"

Features: Lace top cap, Skin Part, Hook Adjustment, Front Velvet Band.

Colors: 1, 1B, 2, 4, 1B/33T, 4/27T, 8/26BT, 280, 40, 2F40/51.

Reg. Price \$55.⁰⁰

30% Off Sale

Sale Price \$38.50



Java

Color shown: 44

Size: Petite **Weight:** 2.4 ozs.

Type: Short crop style.

Length: Front: 3 1/4" Top: 3 1/4" Crown: 3 1/4"
Sides: 2 1/2 - 3 1/2" Back: 2 1/2" Nape: 1 3/4"

Features: Lace top cap, Velcro adjustment, Extended nape(1/2"), Stretch lace back and Perma tease.

Colors: 1, 1B, 2, 4, 6, 33, 34, 40, 44, 280.

Reg. Price \$55.⁰⁰

30% Off Sale

Sale Price \$38.50



Jemma

Color shown: #1B

Size: Average to Large **Weight:** 4.7 ozs.

Type: Full bodied shoulder length style.

Length: Front: 7" Top: 8 - 9 1/2" Crown: 8 3/4"
Sides: 8 1/2" Back: 7 3/4" Nape: 7 3/4"

Features: Lace top cap, Velcro Adjustment, Extended nape (1/2"), Stretch lace back, Skin top, Perma lift, Hand-tied front.

Colors: 1, 1B, 1B/27T, 1B/33T, 2, 2/130T, 4, 4/12, 6, 27, 30, 33, 40, 280.

Reg. Price \$59.⁰⁰

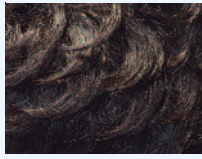
30% Off Sale

Sale Price \$41.30

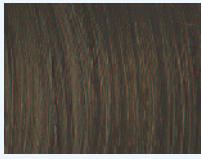


Basic Color Guide

* Browns *



01B Off Black



08 Chestnut



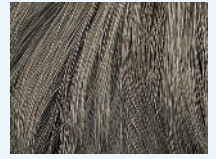
14 Light Brownish
Blonde



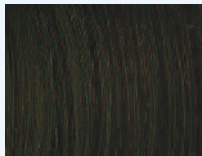
27 Medium
Strawberry Blonde



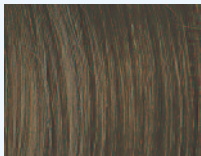
280 50% Off Black
50% Grey



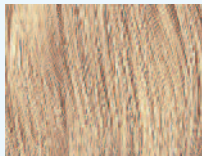
47 50% Gray w/ 50%
Light Ash Brown



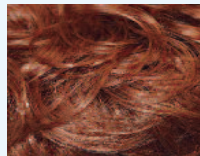
02 Dark Brown



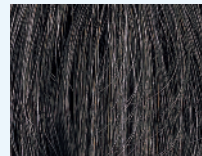
10 Medium Light
Brown



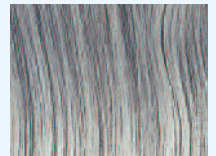
16 Honey Blonde



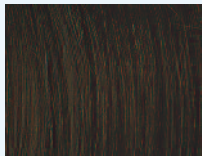
28 Bright
Strawberry Blonde



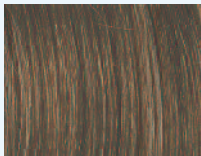
34 Brownish Black
w/25% Gray



51 75% Gray w/25%
Brown Black



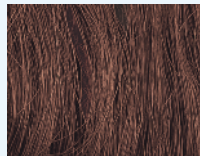
04 Medium Dark



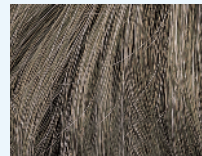
12 Light Brown



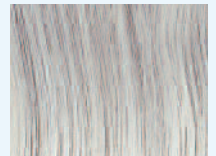
22 Light Blonde



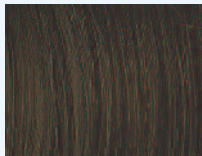
30 Medium Auburn



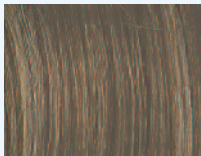
38 Ash Brown
w/40% Gray



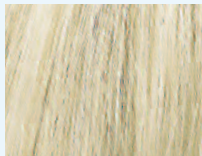
56 90% Gray w/10%
Brown



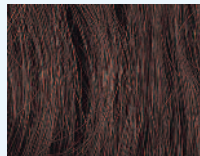
06 Medium Chestnut
Brown



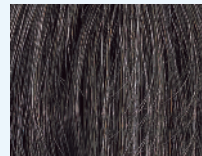
18 Light Ash Brown



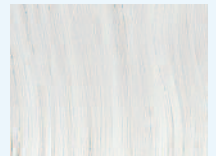
23 Palest Blonde



33 Dark Auburn



38D Medium Brown
w/20% Gray
538 w/Light Fron



60 Silver Gray

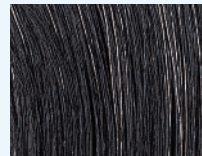
Please check the style you have chosen to be sure it is available in the color you have selected. Please use this guide for comparison only. Actual wig colors will vary.



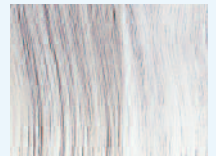
24 Light Ash Blonde



502 Strawberry
Blonde w/
Frosted Highlight



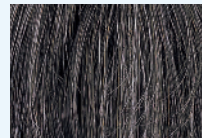
40 90% Off Black
10% Grey



56/60 95% Silver
Gray w/5%
Brown



26B Butterscotch
Blonde

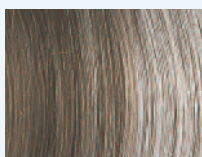


44 50% Gray
w/ 50% Dark
Brown

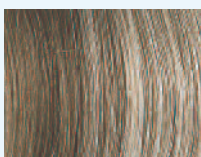


101 Champagne Gray

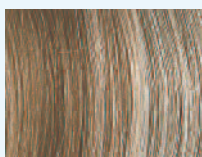
* Frosted/Special Colors *



17/101 Light Ash
Brown w/Champagne
Ash Blonde Frost



18/22 Light Ash
Brown w/Light
Blonde Frost



24/14 Light Golden
Blonde w/Dark
Blonde Frost

Colors

Color is especially important in our fashion-oriented world. We offer you the latest in hair color trends - beautiful colors that will add a new dimension to your hair styles.

First, decide which wig style you would like. Then select your color from the available colors offered in your chosen style. If your style is only available in the new color combinations, here's what to do: From the "Basic Color Guide", choose the color family that suits you best - browns, blondes, reds or grays. Then, from the "Special Color Blends", choose a color combination available in your style. It's easy to do, and you will be very surprised at how great these new colors will look on you!

If you have any questions at all, please call us at 1-800-944-7511. We will be happy to help you.

Please check the color listing located next to each style for availability, since all colors are not available in all styles. Photos are for color comparison only. The actual color may vary.

Many of our new styles have wonderful, fashion colors.

The following is a simple guide to help you understand the different color combinations:

Colors marked	F	indicates frosted shades.
	FS	indicates frosted top and sides.
	FT	indicates front tipped and frosted throughout.
	FTL	indicates front tipped lighter and frosted throughout.
	M	indicates blended shades.
	MT	indicates blended shades which change gradually from lighter in front and top to deeper at nape.
	T	indicates tips are a lighter color.
	TT	indicates two-tone - darker root, lighter ends.
	H	indicates highlights.
	HT	indicates highlighted front hair line and tipped throughout.
	DF	indicates 25% frosted top and sides; darker nape area.
	ALT	indicates alternating rows of different color hair.

Size

Holding a tape measure snugly around your head, measure the circumference of your head by tracing your natural hairline. Start at the front of your head and place the tape measure over your ears and along the nape of your neck.

Petite	Average	Large
--------	---------	-------

21 1/4" or less	21 1/4"- 22 1/2"	22 1/2" or more
-----------------	------------------	-----------------

All of our wigs have velcro or hook adjustments inside, which allow you to increase or decrease the cap size by upto 1".

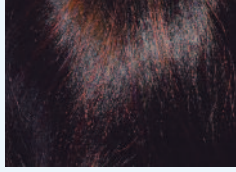
If you are unsure which size to order, choose an average size.

Wig Care & Cleaning Tips

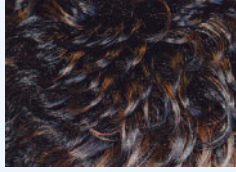
1. Wash your wig with a solution of wig shampoo and cold water, after 5 to 7 wearings or as needed.
2. After rinsing your wig thoroughly in cold water, blot off any excess water with a towel. Never wring, twist or brush a wet wig.
3. Hang your wig loosely on a wig stand and allow it to air dry. Do not use a hair dryer or any heat source.
4. When your wig is completely dry, you may use a wig brush or comb to refresh the styling.

Special highlighted colors

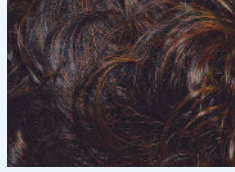
Browns



99J/182 Off Black
Blended With Plum
And Auburn Highlights



2F4/27 Medium Dark
Brown Light Auburn
Front 25% Highlights



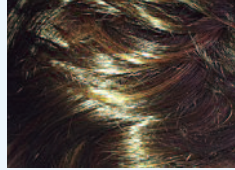
8H Medium Chestnut
Light Chestnut
Highlights



1B/4 Off Black Blended
With Medium Brown



4/30T Medium Brown
Medium Auburn
Blended And Tipped



8/29 Chestnut With Light
Golden Auburn
Highlights



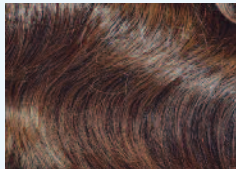
1B/33



FS4/30 Medium
Brown_Medium Auburn
Highlights



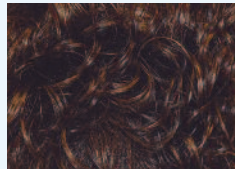
8/27 Light Brown
Blended With Light
Auburn



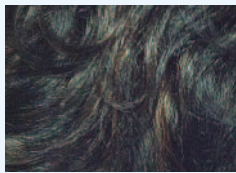
1B/27 Off Black Blended
With Light Auburn



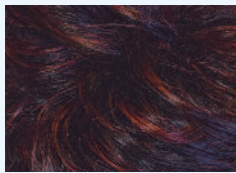
4/131 Medium Dark
Brown_Bright Auburn
Highlights



10H Medium Light
Brown With Medium
Light Brown Highlights



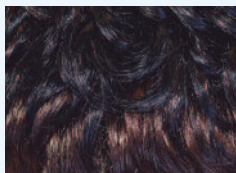
2/30 Dark Brown
Medium Auburn
Highlights



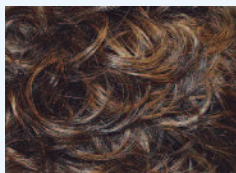
4/132 Dark Brown
Bright Auburn
Highlights



14/26/12 Light golden
Brown Butterscotch
Highlights



2F1B/33 Off Black Dark
Auburn Front 25% Dark
Auburn Highlights



8-20F Dark And Medium
Chestnut Blend
With Honey Highlights



14H Light Brownish
Blonde Honey Ash
Blonde Highlights

Blondes



26SH Light Brownish
Blonde Light Blonde
Highlights



22/12 Light Blonde/
Medium Brown
Highlights



4/263 Light Butterscotch
Brown/ Light Blonde
Highlights



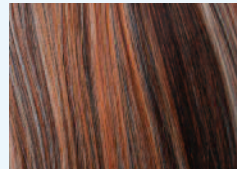
23/16 Light Blonde
Blended With
HoneyBlonde



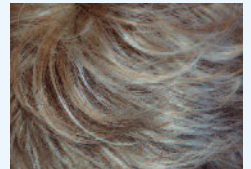
8/26BT



24/613 Apricot Blonde
Palest Blonde
Highlights

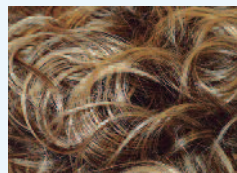


8/26Bt/613



16-21 Light Honey
Blonde Palest
Blonde Highlights

Please call for any help in
choosing a special color
for your wig!
You may also view the
colors online
www.designercollectionsofna.com



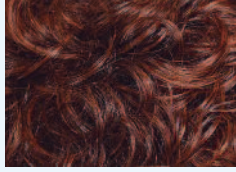
24BT18 Light Ash
Brown Light
Blonde Tips



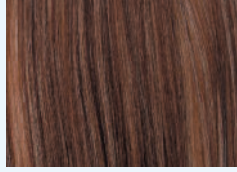
22H Light Blonde

Special highlighted colors

Reds



33/130 Dark Auburn
Bright Auburn Highlights



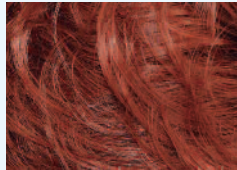
33/26B



273T Bright Medium
And Light Auburn



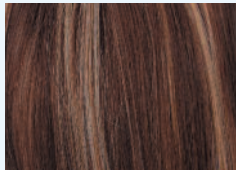
33/127



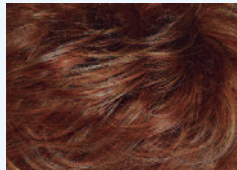
31 Flame Red



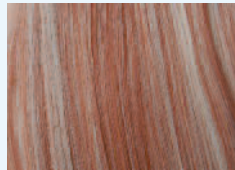
27T Light Auburn Tipped
With Light Blonde



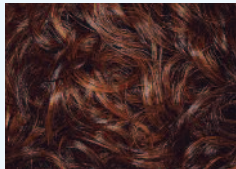
33/27H



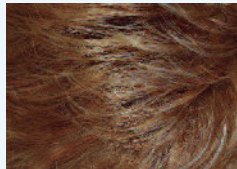
29/28 Bright Auburn
Light Blonde
Highlights



27/613



27/33 Dark Auburn/
Strawberry Blonde
Highlights

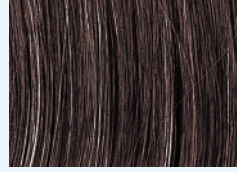


25/127 Butterscotch
Auburn Blonde
Highlights



14/25 Light Golden
Brown Blonde
Highlights

Grey



4G Medium Dark
Brown/15% Grey



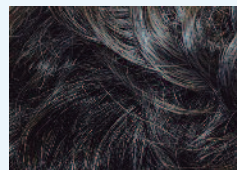
1B/60T Off Black Silver
Grey Tips



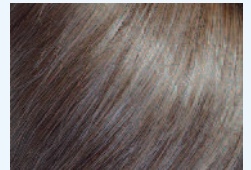
2F40/51 Off Black Blended
With 10% Grey Silver Grey
Front And Highlights



60/44



351 Three Tone Grey
Lighter Grey Front
Darker At Nape



38SH Ash Brown 40%
Champagne Grey
Highlights

Call if you have any questions about our stunning color combinations-Rich Highlights, frost and subtle color blends. You may also view all our colors on our website: www.designercollectionsofna.com Look for our colorguide on the top right hand side of our homepage.

For your convenience you may also order online 24 hours a day, 7 days a week

Our professional hairstylist are on staff 6 days a week
Monday- Saturday 8 AM-6PM Eastern standard time
1-800-248-2482 or 1-800-944-7511



Kali Color shown: 8/26BT

Size: Average **Weight:** 3.2 ozs.

Type: Mid-length curly bob.

Length: Front: 10½" Top: 10½" Crown: 11"
Sides: 10" Back: 9" Nape: 6"

Features: Lace top cap, Hook adjustment,
Extended nape (½"), Stretch lace back,
Front velvet band, Perma tease and
Perma lift.

Colors: 1, 1B, 2, 4, 40, 344, 1B/33T, 4/27T, 8/26BT, 27/613T, M4/30.

Reg. Price \$55.00

30% Off Sale
Sale Price \$38.50



Scarlett Color shown: # 4/131TR

Long curly layer cut with lots of volume. Shake out upside down 3 times and put on, work gently with your hands and add a little luster spray for a natural curly look.

Size: Average **Weight:** 5 oz.

Type: Curly long layered, lots of volume.

Features: Lace Top Cap, Velcro Adjustment,

Open Ear Tabs, Stretch Lace Back,
Perma tease, Perma Lift.

Length: Front: 4" Top: 6" Crown: 6½"
Sides: 10" Back: 14" Nape: 12½"

Colors: 1B, 2, 4, 4/131TR, 6, 8, 8H, 8/26T, 10, 10H, 12, 14,
14/26-12, 16, 16/613SH, 18, 18/22, 22, 22H, 23, 24, 24/14,
24BT18, 26B, 27, 28, 30, 31, 33, 33/130R, 502.

Reg. Price \$69.00

30% Off Sale
Sale Price \$48.30



Sally Color shown: # 1B

Size: Average **Weight:** 6 oz

Type: Skin Top for a Natural Look, Can be brushed into this Soft Wave

Length: 18" Top: 11" Crown: 12"
Sides: 12" Back: 18" Nape: 12"

Features: Lace Skin Top, Hook Adjustment,
Nape Extension, Thin Stretch Lace Back.
Small Front Velvet Band, Perma Tease, Perma Lift.

Colors: 1B, 2, 4, 1B/30H, 4/27H.

Reg. Price \$55.00

30% Off Sale
Sale Price \$38.50



Color Selection Guide

1	Jet Black	18	Light Ash Brown
1/333	Off Black Dark Auburn and Plum Highlights	18/22	Light ash Brown / Light Blonde Highlights
1/B	Off Black	22	Light Blonde
1B/4	Off Black / Medium Brown Highlight	22H	Light Blonde Blended with Palest Bright Blonde
1B/27	Off Black / Light Auburn Highlights or Tips	23	Palest Bright Blonde
1B/30	Off Black / Medium Auburn Highlights or Tips	23/16	Palest Bright Blonde / Honey Highlights
1B/33	Off Black / Dark Auburn Highlights or Tips	24	Light Ash Blonde
1B/39	Off Black / Burgundy Highlights	24/14	Light Golden Blonde / Dark Blonde Highlights
1B/60T	Off Black / Silver Grey Tips	24BT18	Light Ash Brown / Tipped and Blended with Light Blonde
101	Champagne Ash Blond		
2	DarkBrown	24/613	Apricot Blonde / Palest BlondeHighlights
2/27	DarkBrown / Light Auburn Highlights or Tips	25/127	Two tone / Strawberry and Butterscotch Blonde Blend
2/30	Dark Brown / Dark Auburn Highlights or Tips	26B	Butterscotch Blonde
2/130	Dark Brown / Bright Auburn Highlights or Tips	26SH	Light Brown /Light Golden Blonde Highlights
4	Medium Dark Brown	27	Light Auburn
4/27	Medium Dark Brown / Light Auburn Highlights or Tips	27/33	Light and Dark Auburn Blend with Light Auburn Highlights
4/30	Medium Dark Brown / Medium Auburn Highlight or Tips		
4/131	Medium Dark Brown / Sun bronzed Highlights or Tips	27/613	Strawberry Blonde /Palest Blonde Highlights or tips
4/132	Medium Dark Brown / Medium Burgundy Highlights or Tips	27T	Light Auburn Tipped with Light Blonde
4/263	Medium Dark Brown/ Light Brown / Golden Blonde Blend	273T	Bright and Light Auburn Blend
6	Medium Brown	28	Bright Strawberry Blonde
8	Chestnut Brown	29/28	Two Tone Bright Auburn
8/H	Blend of Medium and Chestnut Brown Highligts	30	Medium Auburn
8.20F	Chestnut Brown / Honey Highlights	31	Bright Flame / Strawberry Highlights
8/26	Chestnut Brown / Butterscotch Highlights or Tips	33	Dark Auburn
8/26/613	Chestnut Brown / Butterscotch and Light Blonde Highlights	33/26B	Dark Auburn / Butterscotch Blonde Highlights or Tips
8/27	Chestnut Brown / Light Auburn Highlights	33/27	Dark Auburn / Light Auburn Highlights or Tips
8/29	Chestnut Brown / Honey & Strawberry Highlights	33/127H	Dark Auburn / Bright Auburn Highlights
99J/182	Off Black Blended with Burgundy / Auburn Highlights	34	Brownish Black with 25% Gray
10	Medium Light Brown	38	Ash Brown / 40% Gray
10H	Medium Light Brown / Light Brown Highlights	38D	Medium Brown / 20% Gray
12	Light Brown	38SH	Ash Brown / 40% Champagne Gray
12H	Light Brown/ Brownish Blonde Highlights	40	90 % Off Black / 10%Gray
14	Light Brownish Blonde	44	50% Dark Brown / 50% Gray
14h	Light Brownish Blond / Honey Ash Blonde Highlights	44/60	50% Gray /50% Dark Brown with Silver Gray Highlights
14/22	Light Brownish Blonde / Very Light Blonde tips	47	50% Gray / 50% Dark Brown
14/25	Light Brownish Blonde / Reddish Golden Highlights	51	75% Gray / 25% Off Black
14/26/12	Light Golden Brown / Butterscotch and Blonde Highlights	56	90% Gray / 10% Brown
16	Honey Blonde	56/60	95%Silver Gray / 5% Bronw
16/21	Honey Blonde/ Light Blonde Highlights	60	Silver Gray
16/613	Honey Blonde / Palest Bright Blonde Highlights	60/44	50% Gray /50% Dark Brown with Silver Gray Highlights
17/101	Light Ash Brown / Champagne BlondeHighlights		



Kora Color shown: 1B/33T

Size: Average

Weight: 3.5 ozs.

Type: Great texture, mid length layered cut.

Length: Front: 5" Top: 4" Crown: 4 1/2"

Sides: 5" Back: 8" Nape: 7"

Features: Lace top cap, Hook adjustment,
Extended nape (1/2"),
Stretch lace back, Perma tease Perma lift,
Front velvet band.

Colors: 1, 1B, 2, 4, 6, 33, 1B/27T, 1B/33T, M4/30.

Reg. Price \$55.⁰⁰

30% Off Sale

Sale Price \$38.50



Kian Color shown: 4

Size: Petite to Average

Weight: 2.1 ozs.

Type: Short natural cut.

Length: Front: 3" Top: 2" Crown: 2"

Sides: 2" Back: 2" Nape: 3"

Features: Lace top cap, Hook adjustment,
Stretch lace back, Perma lift.

Colors: 1, 1B, 2, 4, 6, 27, 30, 33, 40, 280, 1B/30T,
1B/33T, 4/27T.

Reg. Price \$55.⁰⁰

30% Off Sale

Sale Price \$38.50



Mocha Color shown: #33

Size: Average

Weight: 2.6 ozs.

Type: Mid-length layered curl style.

Length: Front: 4" Top: 4" Crown: 4"

Sides: 4" Back: 5" Nape: 5 1/2"

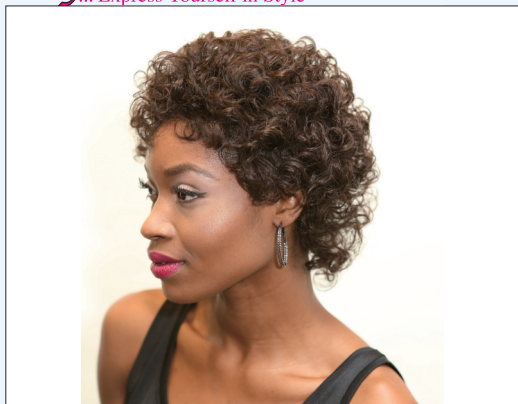
Features: Lace top cap, Hook adjustment,
Extended nape (3/4"), Stretch lace back,
Perma tease, Perma lift.

Colors: 1, 1B, 2, 4, 6, 27, 30, 33, 40, 280, FS4/12.

Reg. Price \$55.⁰⁰

30% Off Sale

Sale Price \$38.50



Nutmeg Color shown: #4

Size: Average **Weight:** 2.3 ozs.
Type: Cury shag with a longer nape, very natural texture.
Length: Front: 3½" Top: 3" Crown: 3"
 Sides: 2½" Back: 2¾" Nape: 5"
Features: Lace top cap, Hook closure, Extended nape (½"),
 Perma tease, Stretch lace back, Perma lift
Colors: 1, 1B, 2, 4, 6, 33, 40, 280.

Reg. Price \$49.00

30% Off Sale
Sale Price \$34.30



Nettie Color shown: 280

Size: Average **Weight:** 2.3 ozs.
Type: Short curly style.
Length: Front: 3¾" Top: 3¾" Crown: 3¾"
 Sides: 3¾" Back: 3¾" Nape: 3¾"
Features: Lace top cap, Velcro adjustment, Extended nape (1"),
 Stretch lace back, Perma tease, Perma lift
Colors: 1, 1B, 2, 4, 6, 27, 30, 33, 40, 280.

Reg. Price \$55.00

30% Off Sale
Sale Price \$38.50



Pepper Color shown: #2

Very popular, short curly style.
Size: Average **Weight:** 2 ozs.
Type: Short curly style.
Length: Front: 4" Top: 3¼" Crown: 3¼"
 Sides: 3" Back: 2¼" Nape: 1¾"
Features: Lace top cap, Velcro adjustment, Extended nape (¾"),
 Stretch lace back, Perma tease, Perma lift.
Colors: 1, 1B, 2, 4, 6, 27, 30, 33, 34, 40, 280.

Reg. Price \$49.00

30% Off Sale
Sale Price \$34.30



Poppy Color shown: #1B

Size: Average **Weight:** 2.7 ozs.
Type: Curly wet-look style.
Length: Front: 4" Top: 3¾" Crown: 4"
 Sides: 4" Back: 4 - 6" Nape: 5½"
Features: Lace top cap, Hook adjustment, Extended nape (½"),
 Stretch lace back, Perma tease.
Colors: 1, 1B, 2, 4, 6, 33, 40, 280.

Reg. Price \$49.00

30% Off Sale
Sale Price \$34.30



New
Heat Resistant
Fiber

Rae

Color shown: 2/33T

Size: Average

Weight: 3 ozs.

Type: Short to Mid Length Curly Bob. Very Natural Looking.

Length: Front: 10 1/2" Top: 10 1/2" Crown: 11"

Sides: 10" Back: 9" Nape: 6"

Features: Lace Top cap, Hook Adjustment,
Nape Extension 1/2", Thin Stretch Lace Open Back.
Front Velvet Band, Perma Tease, Perma Lift.

Colors: 1B, 2, 4, 344, 2/33T, FL4/27, 8/26BT, FL40/51.

Reg. Price \$55.00

30% Off Sale

Sale Price \$38.50



Great
Texture

Sangria

Color shown: 1B/27T

Size: Average

Weight: 3 ozs.

Type: Mid-length page.

Length: Front: 4 1/2" Top: 6" Crown: 6 1/2"

Sides: 6 1/2" Back: 7" Nape: 6"

Features: Lace top cap, Hook adjustment, Extended nape (3/4"),
Stretch lace back, Front velvet band, Perma tease, Perma lift,
Hand-tied crown.

Colors: 1, 1B, 2, 4, 6, 27, 30, 33, 1B/27T, 1B/33T,
8/26BT, FS2/30, FS4/12, M4/30, 33/27H.

Reg. Price \$49.00

30% Off Sale

Sale Price \$34.30



Soju

Color shown: 2F40/51

Size: Average

Weight: 2.5 ozs.

Type: Short, chic design for today's modern woman.
Lightweight, wet look.

Length: Front: 3 3/4" Top: 2 1/2" Crown: 2 3/4"

Sides: 3" Upper Back: 1 1/2" Nape: 1 1/2"

Features: Open cap, Hook Adjustment, Neck Extension, Stretch lace
back, Front Velvet Band, Permatease, Permalift, Wet Look.

Colors: 1B, 2, 4, 2F141/147, 2F1B/30, 2F1B/33, 2F4/27, 2F40/51,
2F44/60, 2F8/26B, FS4/30, F1B/33, TT1B/27, TT1B/30, TT1B/350,
TT1B/39, TT27/613, 280, 351.

Reg. Price \$49.00

30% Off Sale

Sale Price \$34.30



Thadra Color shown: #2/30

Size: Average to Large **Weight:** 4.6 ozs.

Type: Long layered, straight and textured.

Length: Front: 6" Top: 6 - 6½" Crown: 9"
Sides: 9" Back: 9" Nape: 8"

Features: Lace top cap, Hook adjustment, Extended nape (¾"), Stretch lace back, Perma tease, Perma lift and a Handtied crown.

Colors: 1, 1B, 2, 4, 6, 27, 30, 33, 33/27, 2/30, 4/12.

Reg. Price \$55.00

30% Off Sale

Sale Price \$38.50



Tango Color shown: FT44/60

Size: Average **Weight:** 2.2 ozs.

Type: Short, spiky feather cut, with a longer bang for lots of coverage.

Length: Front: 4½" Top: 3" Crown: 3"
Sides: 2¼" Back: 1½" Nape: 2¼"

Features: Open cap, Hook adjustment, Nape extension, Stretch lace back, Front velvet band, Perma tease, Perma lift

Colors: 1B, 2, 4, FT1B/30, FT1B/350, FT4/27, FT4B/327, FT8/26B, FT27/613, FT44/60, FT99J/182, FT230/23.

Reg. Price \$55.00

30% Off Sale

Sale Price \$38.50



Tait Color shown: 27

Size: Average **Weight:** 2.3 ozs.

Type: Classic wavy style with a gently tapered back.

Length: Front: 4" Top: 4" Crown: 4"
Sides: 2½ - 4" Back: 2½ - 3½" Nape: 2"

Features: Lace top cap, Velcro adjustment, Perma tease, Extended nape (½"), Stretch lace back, Hand-tied front, Hand-tied crown.

Colors: 1, 1B, 2, 4, 6, 27, 30, 33, 34, 40, 44, 280, 351, 1B/27T, 1B/33T.

Reg. Price \$55.00

30% Off Sale

Sale Price \$38.50



Tisha Color shown: 2/130T

Size: Average **Weight:** 2.1 ozs.

Type: Tapered back style.

Length: Front: 3¼" Top: 3¼" Crown: 3½"
Sides: 3¼" Back: 3" Nape: 1¾"

Features: Lace top cap, Velcro adjustment, Extended nape (½"), Stretch lace back, Perma tease.

Colors: 1, 1B, 2, 4, 6, 33, 34, 40, 44, 51, 280, 351, 1B/27T, 1B/33T, 1B/60T, 2/130T, 4/30T, 4G, 8/26BT.

Reg. Price \$55.00

30% Off Sale

Sale Price \$38.50



Lauren Color shown: 16/613

An exquisite long, layered page. Mid-length, softly waved strands curl under at the ends, while the shorter sides caress your cheeks.

Size: Average **Weight:** 3.3 oz.

Features: Lace Top Cap, Velcro Adjustment, Extended Nape (1/2") Stretch Lace Back, Front Velvet Band, Perma Tease, Perma Lift.

Length: Front: 4 1/4" Top: 4 3/4" Crown: 5 1/2"
Sides: 5 1/2" Back: 7" Nape: 6"

Colors: 1B, 2, 4, 6, 8, 8H, 8/26T, 10, 10H, 12, 12H, 14, 14H, 14/26-12, 16, 16/613, 17/101, 18, 18/22, 18H, 22, 22H, 23, 24, 24/14, 26B, 27, 28, 30, 31, 33, 33/130R, 34, 38, 38D, 44, 47, 51, 56, 56/60, 60, 101, 502.

Reg. Price \$69.⁰⁰

30% Off Sale

Sale Price \$48.30



Melfi Color shown: 24/14

Our classic boy cut features halo highlights around the frame of the face. All colors feature the lighter front.

Size: Average **Weight:** 2 oz.

Length: Top: 3 1/2" Sides: 3" Nape: 2 1/2"

Colors: 1B, 2, 4, 6, 8, 10, 12, 14, 16, 17/101, 18, 18/22, 22, 24, 27, 30, 33, 34, 38, 38D, 44, 51, 56, 24/14, 538, 60, 101.

Reg. Price \$69.⁰⁰

30% Off Sale

Sale Price \$48.30



Nadia Color shown: 8H

Lovely Chin Length bob with bang.

Size: Average **Weight:** 2 oz.

Type: Short and very stylish.

Features: Partial Open Cap, Velcro Adjustment, Nape Extension 1/2", Thin Stretch Lace Open Back, Front Velvet Band, Perma Tease, Perma Lift.

Length: Front: 3" Top: 4 1/2" Crown: 4 1/2"
Sides: 4" Back: 1 1/2"-2" feather cut Nape: 3 1/2"

Colors: 2/33H, 8H, 12H, 14/26-12, 16/613, 24BT18, 502, 33/27H, 56/60, 44/60SH.

Reg. Price \$69.⁰⁰

30% Off Sale

Sale Price \$48.30



Shelly Color shown: 8/29CB

Straight, light bodied shag, can be feathered towards the face or brushed smooth for a sleek look. Features our new "chunk" colors.

Size : Average

Weight : 3.2 oz.

Type : Straight, layered style

Features: Open Cap, Velcro Adjustment, Thin Wefted, Featherlight® Design, Stretch Lace Back, Front Velvet Band, Perma Tease, Perma Lift

Length : Front:4½" Top: 6" Crown: 5½"

Sides: 7" Back: 8½" Nape:7"

Colors : 4/30CB, 8/20F, 8/29CB, 16/613CB, 26CB, 27/33CB, 33/130CB, 613/27CB.

Reg. Price \$69.⁰⁰

30% Off Sale

Sale Price \$48.30



Nanci Color shown: 56/60

Cute short, permed look with short, springy curls that add body and bounce.

Size: Petite or Average Weight: 2.1 oz.

Features: Featherlight® Design, Velcro Adjustment, Extended Nape (½"), Stretch Lace Back, Front Velvet Band, Perma Tease, Perma Lift

Length: Front: 3½" Top: ¾" Crown: 3"

Sides: 3" Back: 2¾" Nape: 2½"

Colors: 1B, 2, 4, 6, 8, 8H, 10, 12, 14, 14H, 16, 17/101, 18, 18/22, 22, 23, 24, 24/14, 26B, 27, 30, 33, 34, 38, 38D, 44, 47, 51, 56, 56/60, 60, 101, 502, 538.

Reg. Price \$69.⁰⁰

30% Off Sale

Sale Price \$48.30



Rhonda Color shown: 33/130R

Size: Average Weight : 2.8 oz.

Type: Shoulder-length, layered wave cut.

Features: Featherlight® Design, Velcro Adjustment, Extended Nape (1/2"), Open Ear Tabs, Stretch Lace Back, Front Velvet Band, Perma Tease, Perma Lift

Length: Front:4½" Top: 4½" Crown: 4½"

Sides: 4½" Back: 5" Nape: 5½"

Colors: 1B, 2, 4, 4/131TR, 8, 8H, 10, 10H, 12H, 14H, 16, 17/101, 18, 18H, 18/22, 22H, 23, 24/14, 26B, 30, 33, 33/130R, 34, 38, 38D, 38SH, 44, 47, 51, 56/60, 101, 502, 538.

Reg. Price \$69.⁰⁰

30% Off Sale

Sale Price \$48.30



Janel Color shown: 1B

Size: Average **Weight:** 2.4 ozs.

Type: Smooth, straight style.

Length: Front: 4 1/2" Top: 5 1/2" Crown: 5 1/2"

Sides: 1 1/2 - 2" Back: 4 1/2" Nape: 2 1/4"

Features: Human Hair, Lace top cap, Hook adjustment, Extended nape (1/2"), Stretch lace back, Perma tease and a Hand-tied crown.

Colors: 1, 1B, 2, 4, 6, 33, 40, 1B/33T, 4/30T.

Reg. Price \$69.00

30% Off Sale

Sale Price \$48.30



Maddie Color shown: 1B

Size: Average **Weight:** 3.7 ozs.

Type: Chin-length page boy.

Length: Front: 4" Top: 7" Crown: 10 1/2"

Sides: 5 1/2" Back: 8" Nape: 4"

Features: Human Hair, Lace top cap, Hook adjustment, Extended nape (1/2"), Stretch lace back, Perma lift, Hand-tied crown.

Colors: 1, 1B, 2, 4, 6, 33, 40, 4/30T, 1B/33T.

Reg. Price \$69.00

30% Off Sale

Sale Price \$48.30



Tiana Color shown: 6

Size: Average **Weight:** 3 ozs.

Type: Soft curls throughout.

Length: Front: 4 1/2" Crown: 4 3/4" Top: 4 1/2"

Sides: 4" Back: 4 1/2" Nape: 4 3/4"

Features: Human Hair, Lace top cap, Hook adjustment, Extended nape (1/2"), Stretch lace back and a Hand-tied front.

Colors: 1, 1B, 2, 4, 6, 30, 33, 40.

Reg. Price \$69.00

30% Off Sale

Sale Price \$48.30



Zara Color shown: 1B

Size: Average to Large **Weight:** 3.3 ozs.

Type: Long Curls with a Straight Bang.

Length: Front: 4" Top: 9" Crown: 4 1/2"

Sides: 10" Back: 10" Nape: 10"

Features: Lace Top Crown, Hook Adjustment

Nape Extension 1/2", Thin Stretch Lace Open Back.

Front Velvet Band, Perma Tease, Perma Lift

Colors: 1B, 2, 4, 6, 280, 344, FS1B/30, FS4/27.

Reg. Price \$49.00

30% Off Sale

Sale Price \$38.50





Afro Color shown: 1B

Size: Average **Weight:** 2 ozs.

Type: Human Hair Afro.

Length: Front: 4" Top: 4" Crown: 4"
Sides: 4" Back: 4" Nape: 4"

Features: Lace Top Crown, Hook Adjustment,
Nape Extension 1/2", Thin Stretch Lace Open Back.
Front Velvet Band, Perma Tease, Perma Lift.

Colors: 1, 1B, 2, 4, 280, 344.

Reg. Price \$55.00

30% Off Sale

Sale Price \$38.50



Brielle Color shown: B1B/7

Size: Average **Weight:** 2 ozs.

Type: Human Hair Modern Cut.

Length: Front: 5" Top: 4 1/2" Crown: 2 3/4"
Sides: 2 1/4" Back: 2" Nape: 1 1/2"

Features: Lace Top Crown, Hook Adjustment,
Nape Extension 1/2", Thin Stretch Lace Open Back.
Front Velvet Band, Perma Tease, Perma Lift.

Colors: 1, 1B, 2, 4, B1B/30, B1B/33, B1B/7.

Reg. Price \$55.00

30% Off Sale

Sale Price \$38.50



Devin Color shown: 2F40/51

Size: Average **Weight:** 2 ozs.

Type: Human Hair Slight Wavy Cut.

Length: Front: 3" Crown: 3" Top: 3"
Sides: 2 1/4" Back: 2" Nape: 1 3/4"

Features: Lace Top Crown, Hook Adjustment,
Nape Extension 1/2", Thin Stretch Lace Open Back.
Front Velvet Band, Perma Tease, Perma Lift.

Colors: 1, 1B, 2, 4, 280, 2F40/51, 40.

Reg. Price \$55.00

30% Off Sale

Sale Price \$38.50



Julianna Color shown: B2/30

Size: Average **Weight:** 2 ozs.

Type: Human Hair The New Beetle cut.

Length: Front: 4" Crown: 5" Top: 5"
Sides: 7" Back: 3" Nape: 2"

Features: Lace Top Crown, Hook Adjustment,
Nape Extension 1/2", Thin Stretch Lace Open Back.
Front Velvet Band, Perma Tease, Perma Lift.

Colors: 1, 1B, 2, 4, B1B/33, B1B/7, B2B/30, 34, 44.

Reg. Price \$55.00

30% Off Sale

Sale Price \$38.50



Designer Collections
OF NORTH AMERICA

77 Highland Place, Ridgefield Park, NJ 07660 USA

Or Current Resident



Designer Collections
77 Highland Place
Ridgefield Park NJ 07660-1205

30% Off the Entire Catalog

To Place a Credit Card Order Call 8 AM to 6 PM Monday-Saturday (Eastern Time)

1-800-248-2482 or 1-800-944-7511

We accept Visa, MasterCard, Discover and American Express

Order Online at www.designercollectionsofna.com

Fax your order form to : 201-489-0059

Any Questions or Concerns you can also reach us by email at:

orders@designercollectionsofna.com

Offers made in this catalog are not valid on past purchases and cannot be combined with any other offers or products.
Designer Collections® of North America ©2017

Printed in Korea

DC 1216